

Microsoft PowerPoint 2007

Assoc. Prof. Pannipa Phaiboonnimit

Adapted for English Section by Kittipitch Kuptavanich
and Prakarn Unachak

204100 MS PowerPoint

1

Outline

- Screen Layout
- Beginning with Home Tab
- Formatting Objects
- Inserting Objects
- Design
- Slide Show
- Animation
- Printing
- Tips on Creating a Presentation
- An Example

2

Microsoft PowerPoint

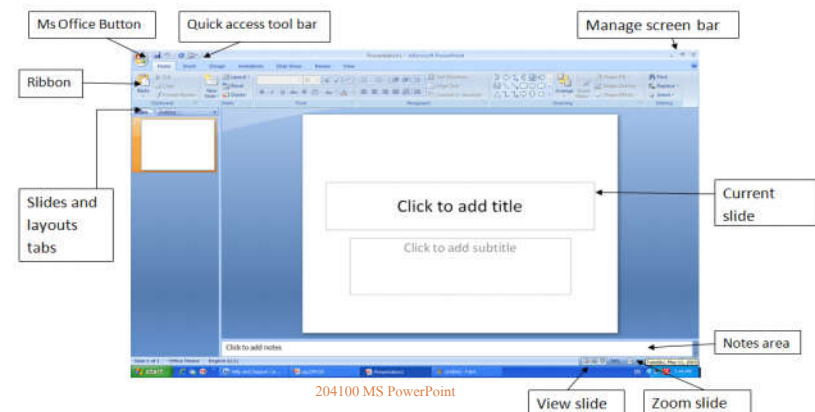
- MS PowerPoint is an application software for creating slide show presentation and related items
- MS PowerPoint can create/ build
 - Presentation Slides
 - Audience handout (handout document to audiences)
 - Speaker's Note (script for a speaker)
 - Outline page (a page of outline to be presented)

204100 MS PowerPoint



3

MS PowerPoint 2007: Screen Layout

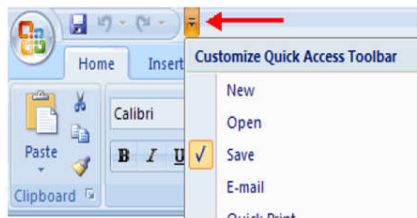


204100 MS PowerPoint

4

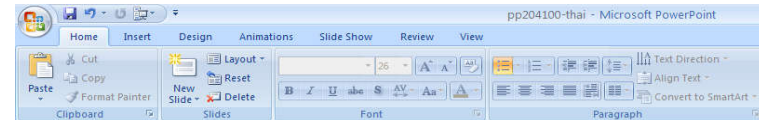
Screen Layout — Quick Access Toolbar

- Contains often-used commands.
 - You can press the downward arrow to customize the toolbar.



5

Screen Layout — The Ribbon (1)



Home: Clipboard, Slides, Fonts, Paragraph, Drawing, Editing
Insert: Tables, Illustrations, Links, Text, Media Clips
Design: Page Setup, Themes, Background
Animations: Preview, Animation, Transition to this slide
Slide Show: Start Slide Show, Setup, Monitor
Review: Proofing, Comments, Protect
View: Presentation Views, Show/Hide, Zoom, Color/Grayscale, Window, Macros

- Extra tabs can appear when you select an object

204100 MS PowerPoint

6

Screen Layout — MS Office Button

- For other version, it will be *File* menu instead.
- Open, Save, Print, Send
- New Presentation



- You can start a new presentation from
 - Template
 - Themes
 - Blank Presentation

204100 MS PowerPoint

7

Templates

- A PowerPoint template is a **pattern** or blueprint of a slide or group of slides



204100 MS PowerPoint

8

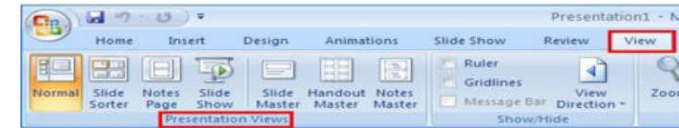
Open and save

- Open
 - MS Office Button → Open → Select File
- Save
 - MS Office Button → Save as → เลือก version
 - Type in File Name → OK

204100 MS PowerPoint

13

Different views in PowerPoint



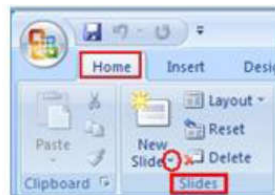
- Creating or editing
 - Normal view
 - Slide Sorter view
 - Notes Page view
 - Master views

204100 MS PowerPoint

14

Adding New Slide

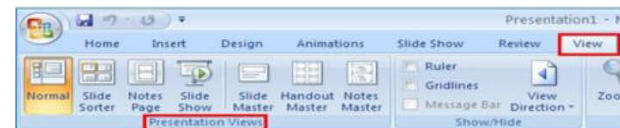
- Add new slide : Home tap → New slide



- Or Press Ctrl-M

15

Different views in PowerPoint



- Normal
 - For editing and creating new slides
- Slide Sorter
 - See the ordering of slides
- Note Page
 - Add notes to the slides
- Slide Show
 - Show the presentation



204100 MS PowerPoint

16

Slide Master

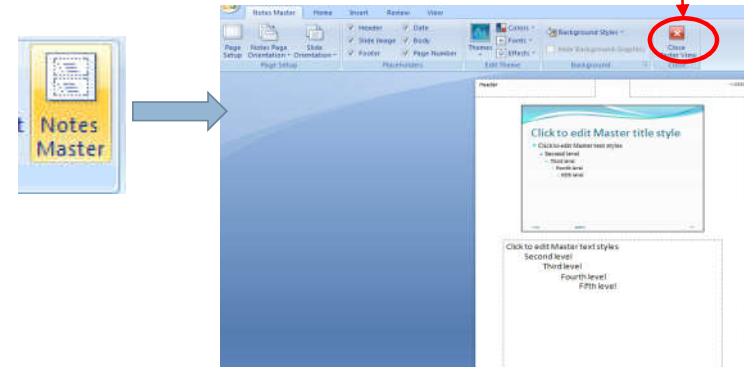


- Used for:

- Make Changes to All Slides
- Adding and Changing Layout

17

Note Master



204100 MS PowerPoint

18

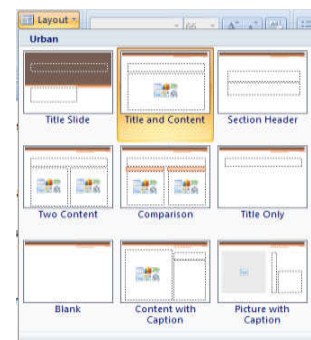
Home Tab

- Slide Layout
- Change Font Typeface and Size
- Alignment & Text Direction
- Drawing
- Editing

204100 MS PowerPoint

19

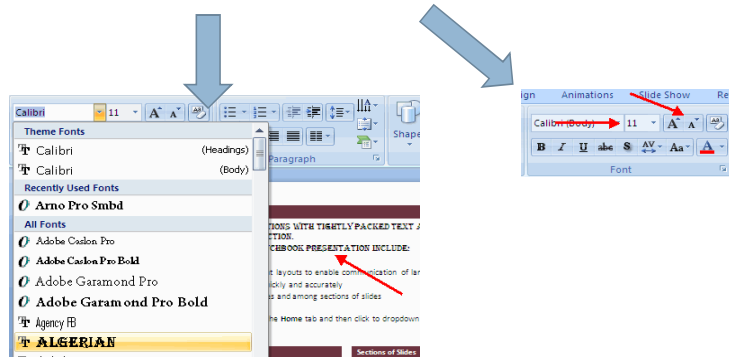
Slide Layout



- On a slide, Define
 - Containers
 - Positioning
 - Format
- Can add your own on Slide Master

20

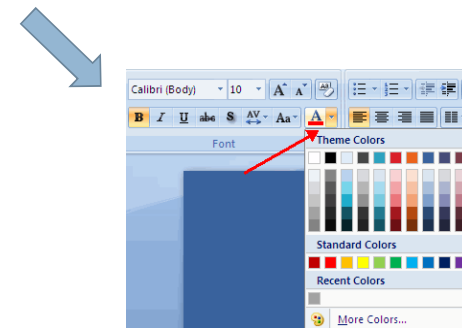
Change Font Typeface and Size



204100 MS PowerPoint

21

Change Text Color

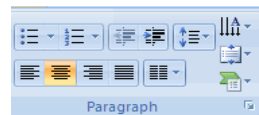


204100 MS PowerPoint

22

Alignment

- Home → alignment
 - Align Left
 - Center
 - Align Right
 - Justify

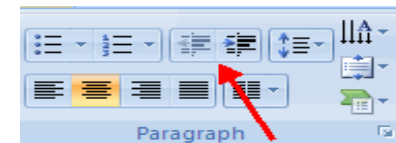


204100 MS PowerPoint

23

Indentation & Paragraphs

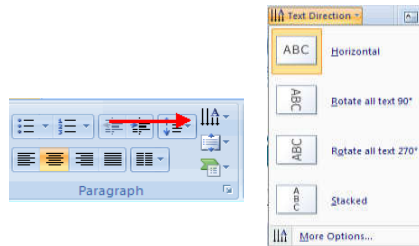
- Increase or Decrease Indentation to Lines of Text



24

Text Direction

- Change the direction of text
- Select the text, then go to Home Tab → Text Direction



204100 MS PowerPoint

25

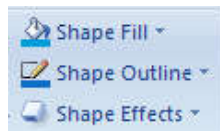
Selecting Objects

- Click on the object you want to select
- Depending of type of objects, additional tabs will appear

26

Formatting Objects

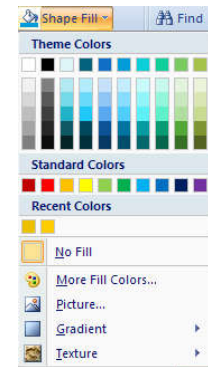
- Change the Appearance of Objects (text box, shapes, etc.)
- Can change:
 - Objects' Color (Shape Fill)
 - Objects' Outline
 - Adding Effects to Objects



27

Shape Fill

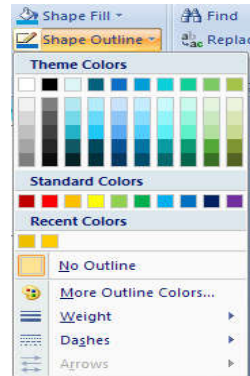
- Adding/Changing Fill Color of an Object
- Select the object, then go to
 - Home Tab → Shape Fill



28

Shape Outline

- Adding/Changing Outline of an Object
 - Type of line
 - Color
 - Weight (width)
- Select the object, then go to
 - Home Tab → Shape Outline



29

Shape Effect

- Adding/Changing Effects to an Object, such as:
 - Shadow
 - Glow
- Select the object, then go to
 - Home Tab → Shape Effects



30

Quick Style

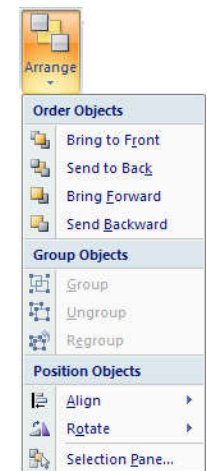
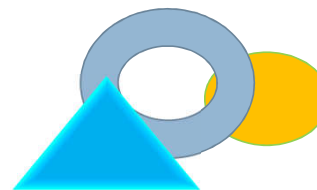
- Adding Styles (fill + outline + effects) to an Object quickly.
- Select the object, then go to
 - Home Tab → Quick Styles



31

Arrange

- Changing the Order of Objects
 - Which one appear in front/in the back of others
- You can also group objects
- Select the object(s), then go to
 - Home Tab → Arrange
 - Then select the ordering/grouping



32

The Insert Tab



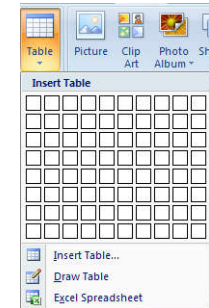
- Table
- Photo Album
- Chart
- Picture
- Shapes
- Hyperlink
- Clip Art
- Smart Art
- Action

More details @ <http://it.usu.edu/tutorials/use-the-insert-tab-in-powerpoint/>
204100 MS PowerPoint

33

Insert Table (1)

- Insert Tab → Table
 - Select dimensions of cells then press Enter of Left Click
- Table Tools Tabs will appear
 - Design
 - Layout



34

Insert Table (2)

- Design Tab is for changing the look (border, color)
 - Select the image you want
 - Click Insert
- Layout Tab is for changing how cells/table are positioned



35

Insert Picture

- Insert Tab → Picture
 - Select the image you want
 - Click Insert
- Format Tab (Picture Tools)
 - Alter color, shapes, position, even which part will be shown (crop)



36

Insert Clip Art

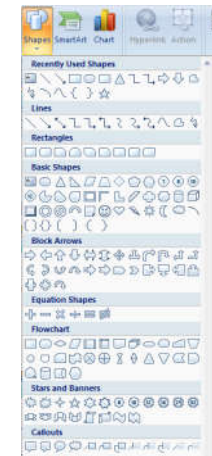
- Insert Tab → Clip Art
 - Clip Art panel will appear
 - Use keywords to search for clip arts
 - Type keywords under *Search for:*
 - Click *Go*
- Clip Arts are not available in later version



37

Insert Shapes

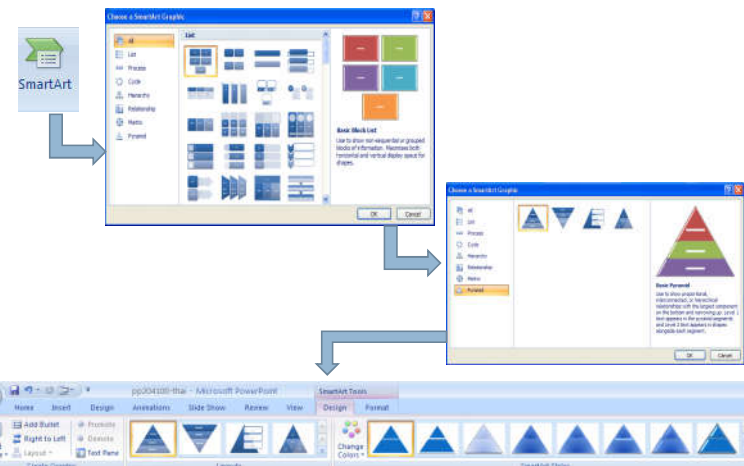
- Insert Tab → Shapes
 - Select the shape you want
 - Then click-and-drag to draw it on the slide



38

Insert SmartArt

- Premade combination of texts and shapes
- Insert Tab → SmartArt
- Select SmartArt
- Make changes as you'd like
 - Type in Text
 - Change Color and Layout

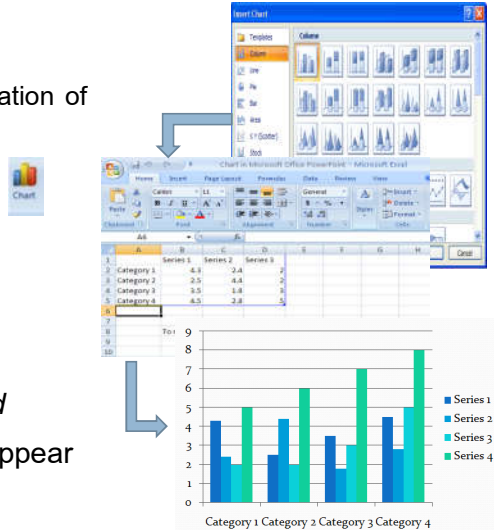


40

39

Insert Chart

- Graphical Representation of Data (graph)
- Insert Tab → Chart
 - Select Chart Type
 - Type in Data on Spreadsheet
 - Adjust Details
- Design, Layout and Format Tabs will appear



41

Insert Text Objects



- Text Box
 - Insert Tab → Text Box
 - Click and Drag to position the text box
 - Type in the Text

42

Text Objects

- Add text
 - click text box → drawing text box → typing letter
- Add word art
 - Click word art → select type → typing letter
- Add symbol
 - Click Symbol → select symbol → insert

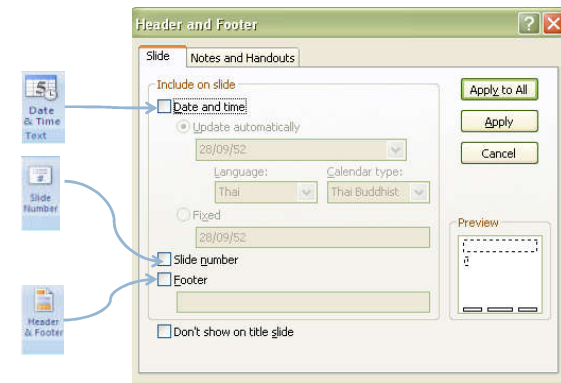
- When you select a shape or a text object, *Format* tab (Drawing Tools) will appear



43

Adding Header and Footer

- Insert Tab → Header and Footer



44

Links

- Hyperlink



- Create Link to web page, picture, e-mail, other slide
- Select object → Insert tab → Hyperlink

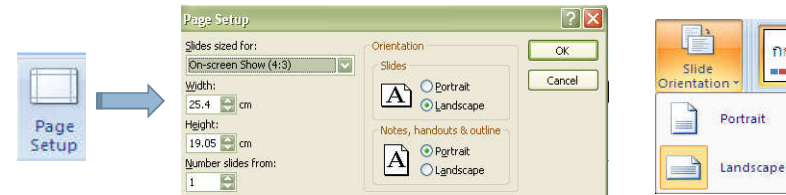
- Action

- Add the action to the object selected what will be happen when click or moving mouse cursor over it.
- Example.
- Select object → Insert tab → Action

45

Design Tab

- Page Setup & Slide Orientation



- Themes

- Background

204100 MS PowerPoint

46

Theme



- Theme

- Design → select theme

- To apply new colors to a theme:

- Click the **Colors** drop down arrow
- Choose a color set or click **Create New Theme Colors**

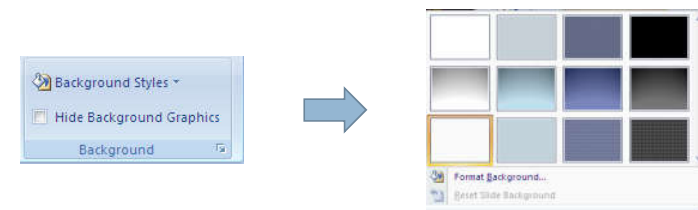


47

Background

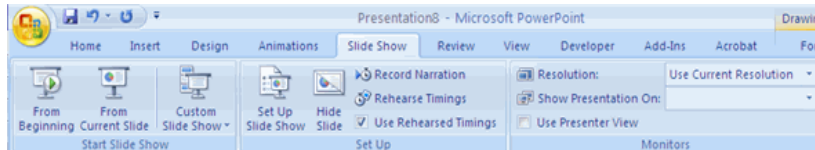
- Background

- Design → Background styles



48

Slide Show



204100 MS PowerPoint

49

Slide Show (cont.)

- Custom Slide Show
 - Show chosen slides and ordering
- Set Up (default) Slide Show
 - Show Type
 - Screen
 - Custom Order
- Hide (current) Slide
- Record Narration
- Rehearse Timing

204100 MS PowerPoint

50

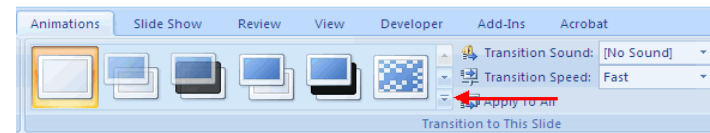
Animations Tab

- Slide Transition
- Slide Animation
- Animation Preview

204100 MS PowerPoint

51

Slide Transition



- Slide transitions are the animation-like effects that occur in Slide Show view when you move from one slide to the next during an on-screen presentation.

204100 MS PowerPoint

52

Using Slide Transition

- Transition Effect
- Transition Sound
- Transition Speed
- Apply to All

204100 MS PowerPoint

53

Slide Animation

- Animation effects and sounds can add excitement to your presentations and help you emphasize key points while you deliver the slide show
- To Apply an Animation Effect
 - Select the object
 - Click the **Animations** tab on the Ribbon
 - Click **Custom Animation**
 - Click **Add Effect**
 - Choose the appropriate effect

54

Custom Animation

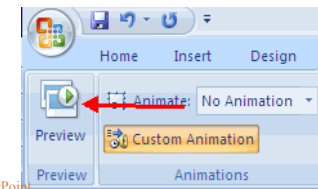
- Effect Options
 - Effects
 - Timing
- Ordering

204100 MS PowerPoint

55

Animation Preview

- To preview the animation on a slide:
 - Click the **Preview** button on the **Animations** tab

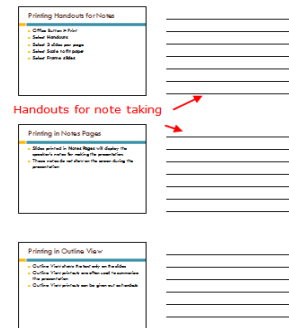


204100 MS PowerPoint

56

Printing Slides

- Handouts
- Notes pages
- Presentation
- Outline view



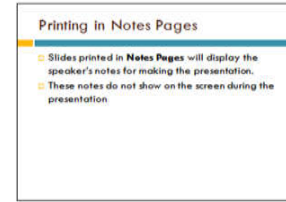
204100 MS PowerPoint

57

Printing Slides

Note Page

Outline View



These are my notes for this slide.

Printing in this view is a way for the speaker to write his own jot notes about his talk while this slide is on the screen.

The notes will print out when the slide is printed in Notes Pages. These notes do not show on the screen during the presentation.

- ☐ **TITLE SLIDE**
Printed in Color
- ☐ **Printing Whole Slides**
☐ Office Button > Print
☐ Make sure that Slides is selected in the *Print what:* box
☐ It is a good idea to Scale slide to fit paper
☐ Choose to print in color, grayscale or pure black and white
- ☐ **Printing Handouts**
☐ Office Button > Print
☐ Select Handouts from the *Print what:* section
☐ Select number of slides to print
☐ Select Scale to fit paper
☐ Select Frame slides
- ☐ **Printing Handouts for Notes**
☐ Office Button > Print
☐ Select Handouts
☐ Select 3 slides per page
☐ Select Scale to fit paper
☐ Select Frame slides
- ☐ **Printing in Notes Pages**
☐ Slides printed in Notes Pages will display the speaker's notes for making the presentation.
☐ These notes do not show on the screen during the presentation
- ☐ **Printing in Outline View**
☐ Outline View shows the text only on the slides
☐ Outline View printouts are often used to summarize the presentation
☐ Outline View printouts can be given out as handouts

204100 MS PowerPoint

58

Steps to Create a Presentation

1. Plan your content

▫ Ask yourself:

- What is the purpose of your presentation?
- What message do you want to deliver?

▫ Write up the outline with all the necessary topics

204100 MS PowerPoint

59

Steps to Create a Presentation

2. Add details to all topics

- Add important details to all topics.
- Remove any unnecessary details
- Too much graphic/details can be distracting
- One topic per slide.

204100 MS PowerPoint

60

Steps to Create a Presentation

3. Support the headline with graphic evidence

- support your points with graphic evidence.
- This can include photos, images, charts and diagrams.

Steps to Create a Presentation

4. Fine Tuning

- Fonts
- Transition
- Animation
- Too much can be distracting

Steps to Create a Presentation

5. Put details in the handouts

- The handouts should have the necessary details not included in the slides
- PowerPoint supports printing in different formats e.g. note pages, handouts

Making Presentation

- Topic: Facts about Cat
- Length: 1 page

Facts about Cats

- Scientific Name: *felis catus*
- Cats are carnivorous
- Young cats are called kitten
- Rub cat's belly at your own risk!

65

Facts about Cats – With Pictures!

- Scientific Name: *felis catus*
- Cats are carnivorous
- Young cats are called kitten
- Rub cat's belly at your own risk!



66

Facts about Cats

- Scientific Name: *felis catus*
- Cats are carnivorous
- Young cats are called kitten
- Rub cat's belly at your own risk!



67

References

- <http://www.speakingaboutpresenting.com/design/powerpoint-design-recommended-tips/>
- <http://lifehacker.com/5810271/how-to-create-presentations-that-dont-suck>
- <http://lifehacker.com/how-can-i-make-my-powerpoint-presentations-amazing-507552122>
- <http://www.wikihow.com/Create-a-PowerPoint-Presentation>
- <http://office.microsoft.com/en-us/powerpoint-help/understand-the-difference-between-powerpoint-templates-and-themes-HA010360907.aspx>
- <http://office.microsoft.com/en-001/mac-powerpoint-help/switch-to-different-views-in-powerpoint-HA102928521.aspx>
- http://presentationsoft.about.com/od/powerpoint2007/ss/080518print2007_6.htm
- <http://it.usu.edu/tutorials/use-the-insert-tab-in-powerpoint/>

204100 MS PowerPoint

68